

QGIS MAP GEOMORPHOLOGICAL SYMBOLS LIBRARY

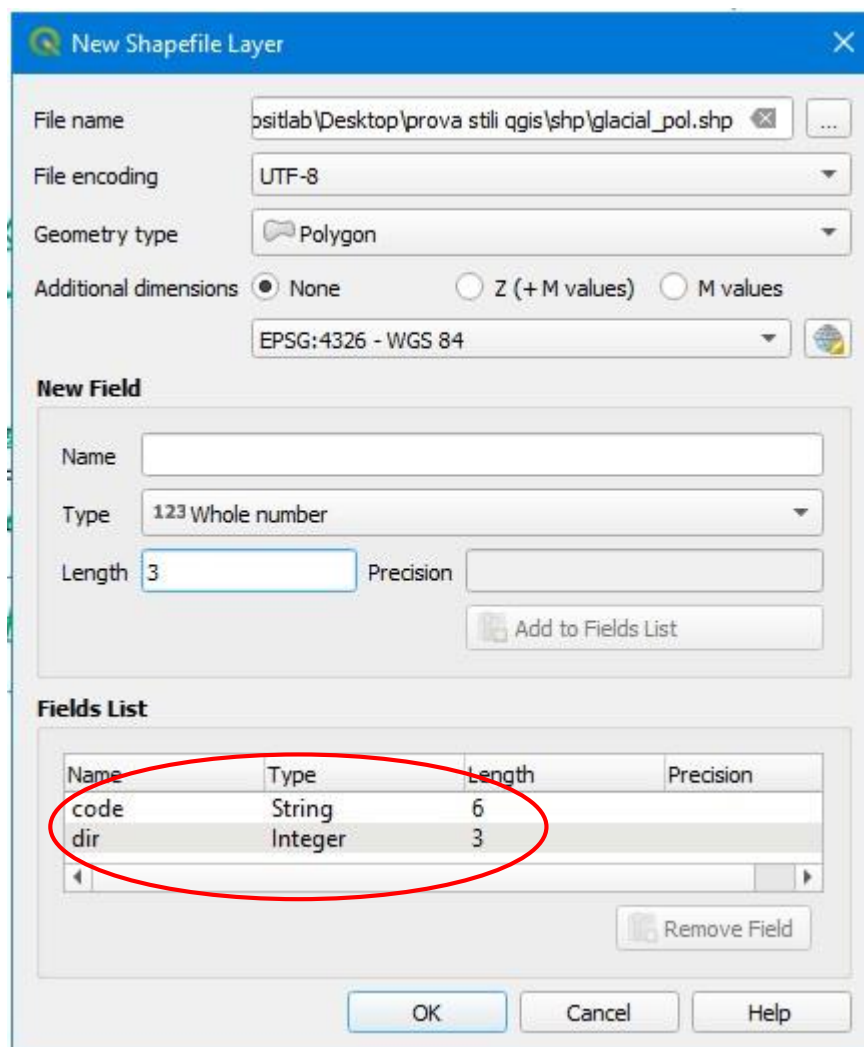
INTRODUCTION

Thank you for downloading our QGIS geomorphological map symbols.

In the “style” folder you will find QML files differentiated by geomorphological agent and geometry type (e.g. gravitational_pol).

HOW TO USE QML FILES

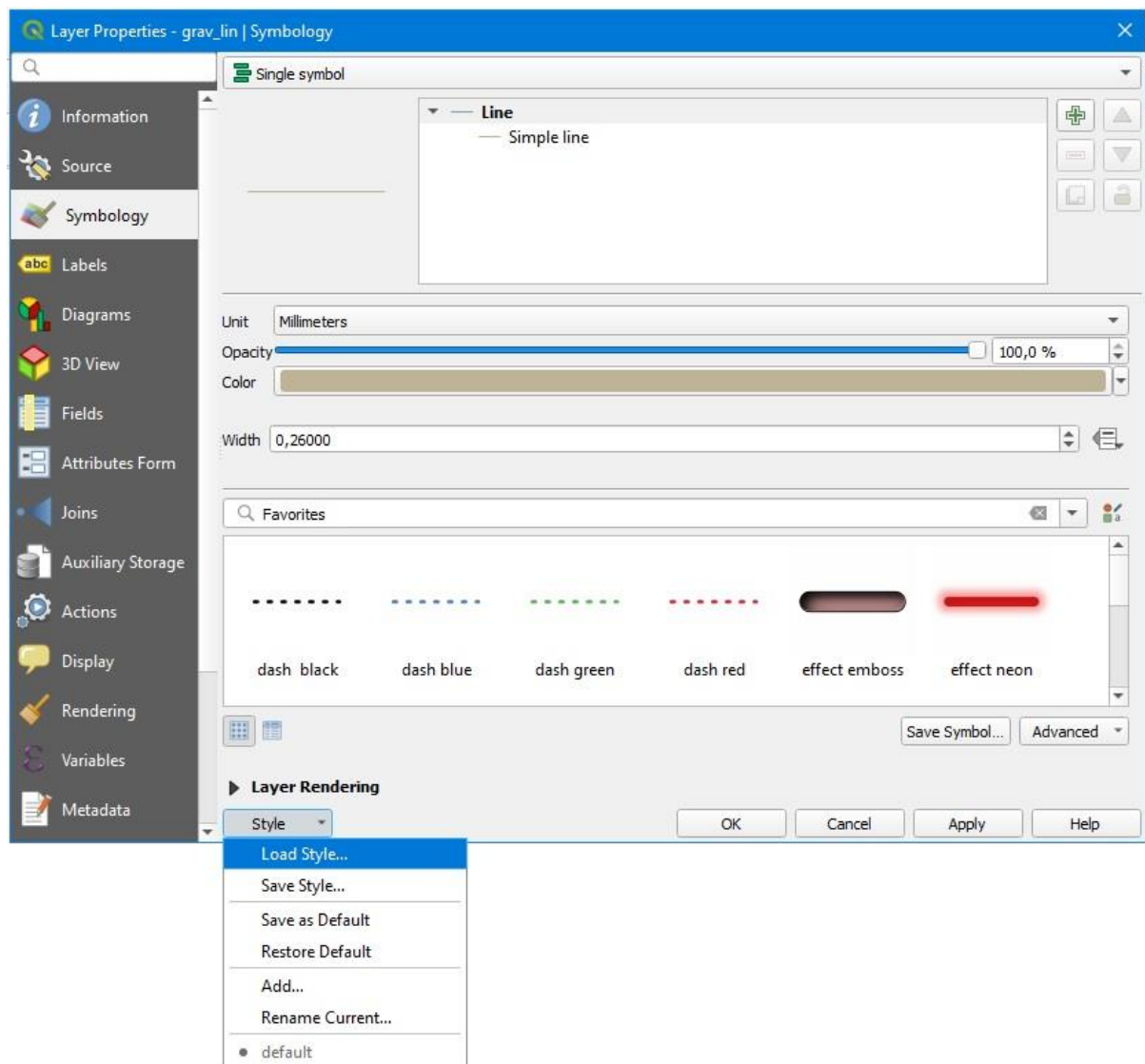
Step 1 - Create a vector layer with at least the two following attributes: “code” – text data – length 6; “dir” – whole number – length 3;



The screenshot shows the 'New Shapefile Layer' dialog box. The 'File name' is 'psitlab\Desktop\prova stili qgis\shp\glacial_pol.shp'. The 'File encoding' is 'UTF-8'. The 'Geometry type' is 'Polygon'. The 'Additional dimensions' are set to 'None'. The 'CRS' is 'EPSG:4326 - WGS 84'. The 'New Field' section has a table with two fields: 'code' (String, Length 6) and 'dir' (Integer, Length 3). A red circle highlights these two fields in the 'Fields List' table.

Name	Type	Length	Precision
code	String	6	
dir	Integer	3	

Step 2 - Open “Layer properties” on the “Symbology” window and select “Style”, then “Load style...”. Select and open desired QML file from “style” folder;



MORE OPTIONS

Some symbols can be oriented (that is why you need the “dir” attribute). In such case you will find a red button on the rotation option of the symbol setting. You will need to define the field where the style should bring this information from.

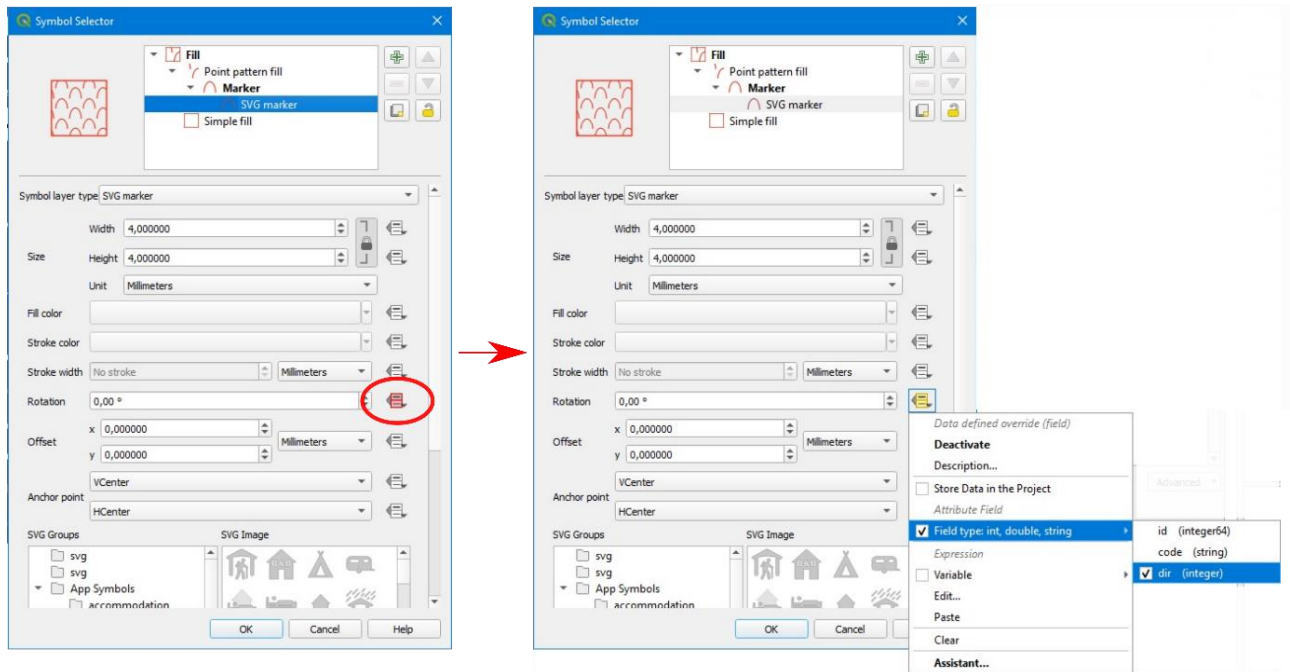
To do that:

Step 1 - Open “layer properties” – “symbology”;

Step 2 - Double click on symbol you need to update;

Step 3 - Click on the red button on the right of “rotation” field (wherever you find it on the fill tree)

Step 4 - In “field type:..” select the field assigned to direction option (dir)



TO KNOW MORE

If you need more information, any help or suggestion to use or improve our QML legend style pack do not hesitate to contact us at: federico.tognetto@unito.it

If you want to see the original paper go to [Journal of Maps website](#).

If you want to see directly the map produced with the available symbols, download it [here](#).

HOW TO CITE US

If you are using our symbols in your work, please cite us as follows:

F. Tognetto, L. Perotti, C. Viani, N. Colombo & M. Giardino (2021) Geomorphology and geosystem services of the Indren-Cimalegna area (Monte Rosa massif – Western Italian Alps), Journal of Maps, 17:2, 161-172, DOI: 10.1080/17445647.2021.1898484